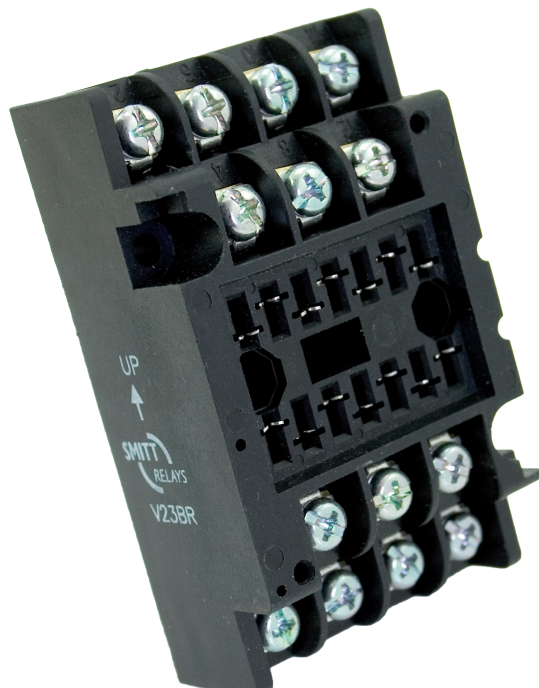


# V23BR socket - Screw terminal, rail mount

## Datasheet



### Description

The V23BR is a 35 mm rail mount relay socket with extra space for ring tabs. The V23BR socket has one screw terminal per relay contact suitable for two wires up to 2.5 mm<sup>2</sup> and 9 mm ring tabs, so looping/daisy chaining can be done on the socket and no external connector or terminal is needed.

To prevent fault relay placement the socket can be equipped with mechanical keying to accept only designated identical keyed relays.

Clear UP ↑ arrow for correct 35 mm rail mounting.

### Application

The V23BR relay socket is suitable for general industrial applications with a space saving design, where extra space for ring tabs is necessary. Installation and replacement of relays is made easy and cost saving. No maintenance is required for the user.

Suitable for all D-relay series.

### Features

- 35 mm rail mount
- Sturdy screw terminals
- Suitable for 9 mm ring tabs
- Height saving 35 mm rail mounting
- Suitable for all D-relay series
- Up to two wires of 2.5 mm<sup>2</sup> per connection terminal
- Positive mechanical keying
- Bifurcated female receiver for tight grip relay pin
- Clear terminal ID

### Benefits

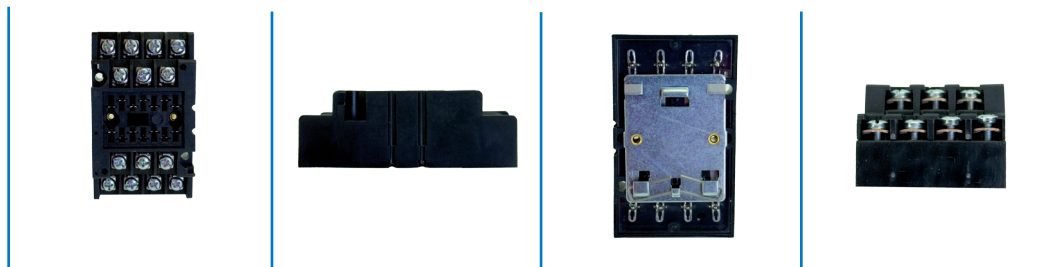
- Proven reliable
- Long term availability
- Easy to maintain
- Low life cycle cost
- No maintenance

### Industry compliancy

- EN 60947-5-1 - Electromechanical control circuit devices and switching elements
- IEC 61810 - Electromechanical elementary relays

# V23BR socket

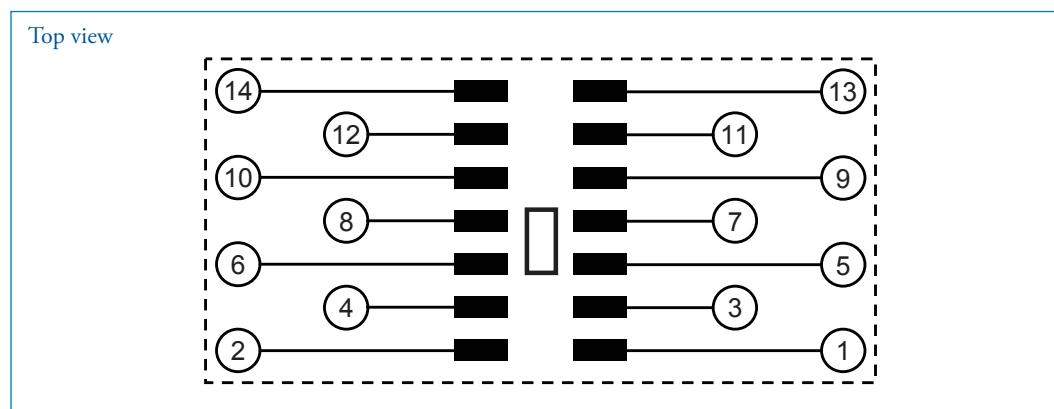
## Technical specifications



## Technical characteristics

Contact rating	10 A
Dielectric strength	IEC 60255 / IEC 60571, 2500 V, 50 Hz, 1 min
Protecting category	IEC 60529, IP10 (relay side)
Mounting	35 mm rail mount
Max. ambient temperature	80 °C
Weight	128 g
Dimensions	80 x 48 x 29.2 mm
Wire size	2 x 2.5 mm <sup>2</sup> maximum
Material	Polyamide 66, 30% glass
Socket contacts	Screw M3.5
Max. torque value mounting screws	1 Nm
Max. torque value terminal screws	1 Nm
Accessories	A104 Key receptacle

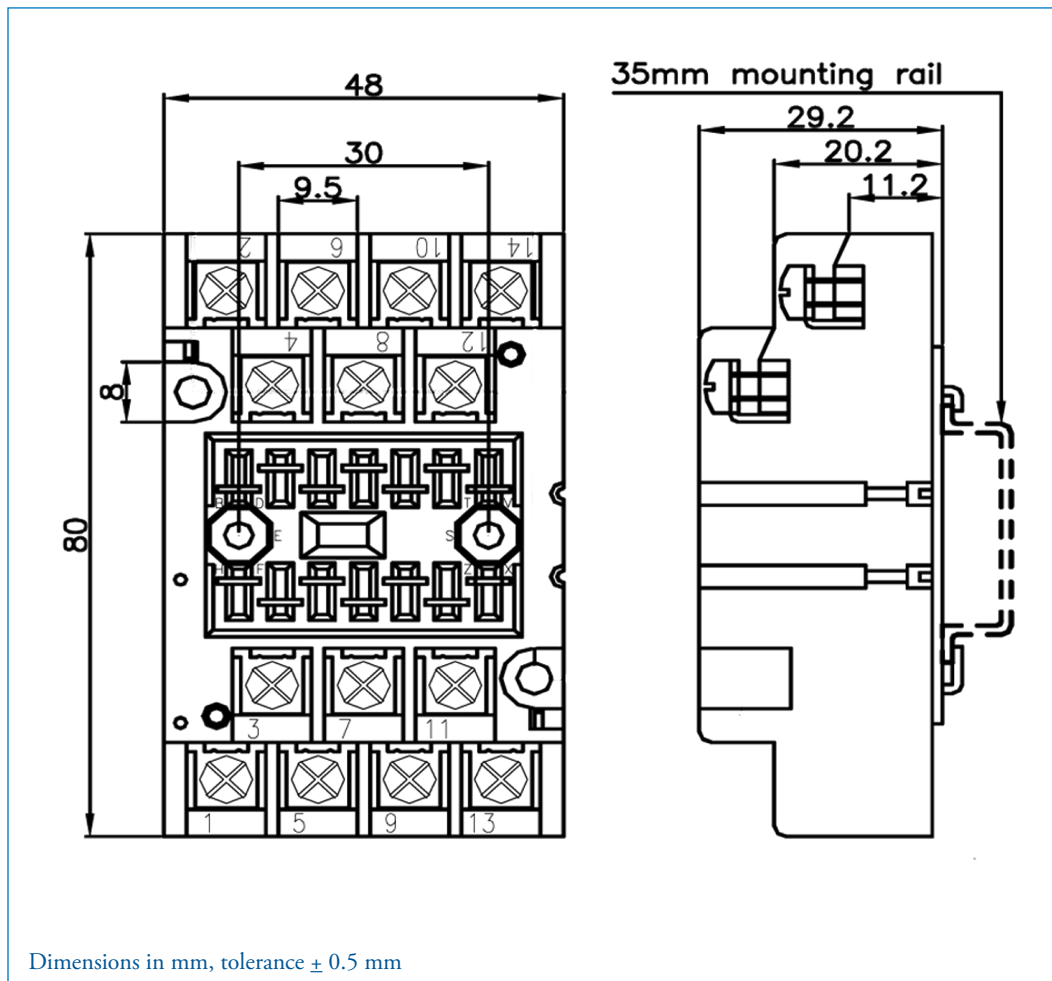
## Connection diagram



# V23BR socket

## Technical specifications

### Dimensions



# V23BR socket

## Technical specifications

V93BR Panel / flush mount for 8 contact relays (D8 or KDN series)

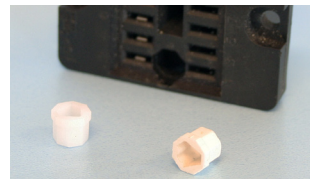
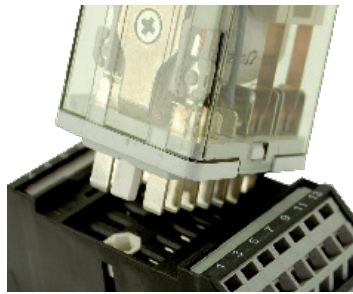


For details see datasheet V93BR.

# V23BR socket

## Technical specifications

### Mechanical keying relay and socket (optional)



Function:

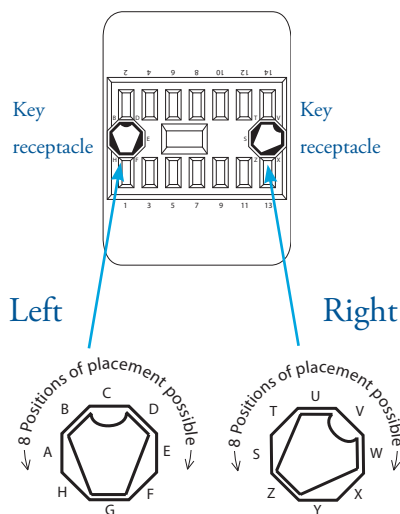
- To prevent wrong installation
- To prevent damage to equipment
- To prevent unsafe situations

Using keyed relays and sockets prevents a relay being inserted in a wrong socket. For example it prevents placing a 24 VDC relay in a 110 VDC circuit. Positive discrimination is possible per different function, coil voltage, timing, monitoring, safety and non-safety.

The D-relays socket keying option gives  $8 \times 8 = 64$  possibilities. Upon ordering the customer simply indicates the need for the optional keying. Mors Smitt will assign a code to the relay and fix the pins into the relay. The sockets are supplied with loose key receptacles. Inserting the keys into the socket is very simple and self explaining.

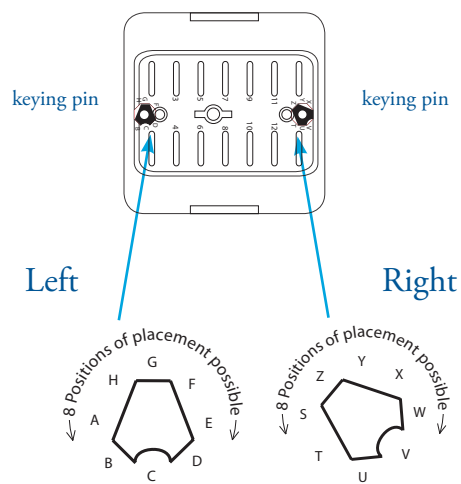
Remark: sockets and relay types are only examples.

Top view socket



Example keying position G-Z on socket

Bottom view relay



Example keying position G-Z on relay

# V23BR socket

## Technical specifications

### Installation & inspection

#### Installation

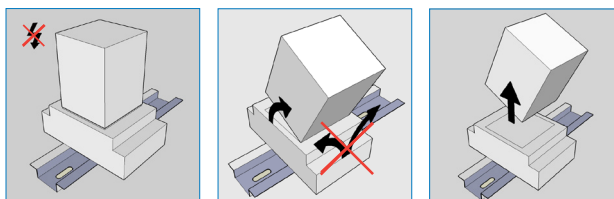
Before installation or working on the relay: disconnect the power supply first!

Install socket and connect wiring according to the terminal identification. Plug relay into the socket ensuring there is no gap between the bottom of relay and the socket. Reverse installation into the socket is not possible due to the mechanical blocking snap-lock feature.

No external retaining clip needed as the 'snap-lock' will hold the relay into the socket under all circumstances and mounting directions (according shock & vibration requirements IEC 61373, Category I, Class B, Body mounted). If regulations require an external retaining clip, this is available as well. For more information see the datasheet of the retaining clips.

#### Warning!

- To remove relays from the socket, employ up and down lever movements. Sideway movement may cause damage to the coil wires.



When plugging the relay into the socket, the female bifurcated receivers will automatically cut through the corrosion on the pins and guarantee a reliable connection.

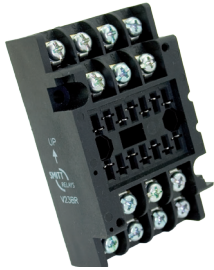
#### Inspection

If the socket does not work after inspection of the correct wiring and relay connection, replace the unit with a similar model.

When returning products for investigation, please provide all information on the RMA form. Send defective products back to the manufacturer for repair or replacement. Normal wear and tear or external causes are excluded from warranty.

# V23BR socket

## Ordering possibilities



V23BR



V93BR



A104

Article nr	Code	Description
338000402	V23BR	Screw terminal relay socket
338003925	V93BR	Screw terminal relay socket for 8 contact relays
378690100	A104	Key receptacle





[www.morssmitt.com](http://www.morssmitt.com)



Mors Smitt France SAS  
Tour Rosny 2, Avenue du Général de Gaulle,  
F - 93118 Rosny-sous-Bois Cedex, FRANCE  
T +33 (0)1 4812 1440, F +33 (0)1 4855 9001  
E [sales.msf@wabtec.com](mailto:sales.msf@wabtec.com)

Mors Smitt Asia Ltd.  
29/E, Fun Towers, 35 Hung To Road  
Kwun Tong, Kowloon, HONG KONG SAR  
T +852 2343 5555, F +852 2343 6555  
E [sales.msa@wabtec.com](mailto:sales.msa@wabtec.com)

Mors Smitt B.V.  
Vrieslantlaan 6, 3526 AA Utrecht,  
NETHERLANDS  
T +31 (0)30 288 1311, F +31 (0)30 289 8816  
E [sales.msbv@wabtec.com](mailto:sales.msbv@wabtec.com)

Mors Smitt Technologies Inc.  
1010 Johnson Drive,  
Buffalo Grove, IL 60089-6918, USA  
T +1 847 777 6497, F +1 847 520 2222  
E [salesmst@wabtec.com](mailto:salesmst@wabtec.com)

Mors Smitt UK Ltd.  
Graycar Business Park, Barton under Needwood,  
Burton on Trent, Staffordshire, DE13 8EN, UK  
T +44 (0)1283 722650 F +44 (0)1283 722651  
E [sales.msuk@wabtec.com](mailto:sales.msuk@wabtec.com)

RMS Mors Smitt  
6 Anzed Court, Mulgrave,  
VIC 3170, AUSTRALIA  
T +61 (0)3 8544 1200 F +61 (0)3 8544 1201  
E [sales.rms@wabtec.com](mailto:sales.rms@wabtec.com)