

Installation instructions

V23/V29/V93/V99 sockets on 35 mm rail



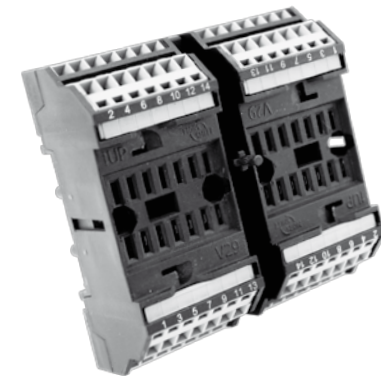
V23



V93



V29



V99



www.morssmitt.com

MS Relais SAS
Tour Rosny 2, Av. du Général de Gaulle,
F - 93118 Rosny-sous-Bois Cedex,
France
T +33 (0)1 4812 1440
F +33 (0)1 4855 9001
E sales@msrelais.com

Mors Smitt Asia Ltd.
807, Billion Trade Centre,
31 Hung To Road, Kwun Tong,
Kowloon, Hong Kong
T +852 2343 5555
F +852 2343 6555
E info@morssmitt.hk

Nieaf-Smitt B.V.
Vrieslantlaan 6,
3526 AA Utrecht,
Netherlands
T +31 (0)30 288 1311
F +31 (0)30 289 8816
E sales@nieaf-smitt.nl

Mors Smitt UK Ltd.
Doulton Road, Cradley Heath
West Midlands,
B64 5QB, UK
T +44 (0)1384 567 755,
F +44 (0)1384 567 710
E info@morssmitt.co.uk

Mors Smitt Technologies inc.
420, Sacket Point Road,
North Haven, CT 06473,
USA
T +1 203 287 8858
F +1 888 287 8858
E mstechnologies@msrelais.com

35 mm rail instructions V1.1 June 2012

(c) Copyright 2012
All rights reserved. Nothing from this edition may be multiplied, or made public in any form or manner, either electronically, mechanically, by photocopying, recording, or in any manner, without prior written consent from Mors Smitt. This also applies to accompanying drawings and diagrams. Due to a policy of continuous development Mors Smitt reserves the right to alter the equipment specification and description outlined in this sheet without prior notice and no part of this publication shall be deemed to be part of any contract for the equipment unless specifically referred to as an inclusion within such contract.

www.morssmitt.com



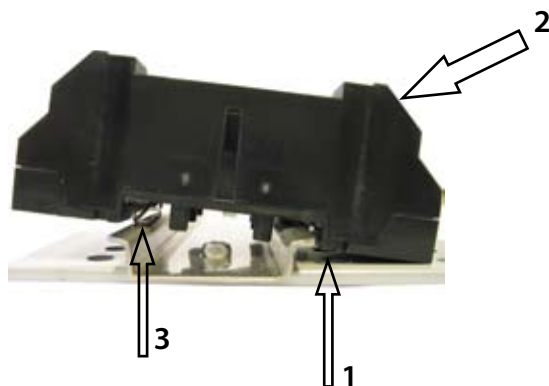
Mount the socket on the 35 mm rail

Step 1

Place the socket on the rail.
Make sure the plastic clips of the socket are placed under the metal rail [1].

Push the socket in the direction of arrow [2] to push the metal part of the spring [3] over the rail.

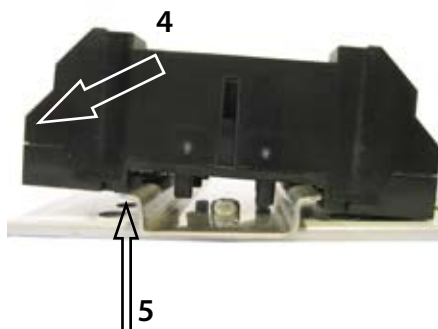
A click is heard (first click).



Step 2

Push the socket in the direction of arrow [4] to place the clips [5] over the rail.

A second click is heard.



Step 3

The socket is mounted properly.

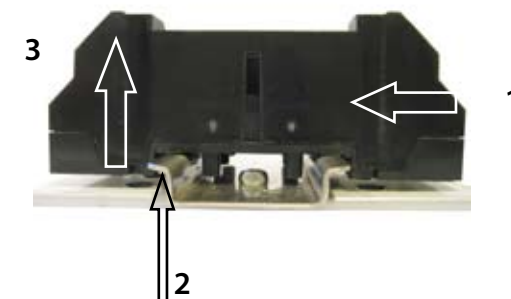


Note: It is not necessary to use excessive force to mount the socket on the rail.

Remove the socket from the 35 mm rail

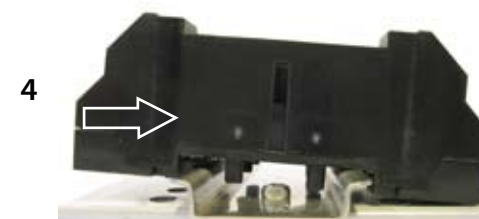
Step 1

Firmly push in the direction of arrow [1], to release the clips [2] from the rail.
Pull up the socket according to the arrow [3].



Step 2

When the socket is pulled up, push in the direction of arrow [4] to remove the socket.



Note: It is not necessary to use excessive force to remove the socket from the rail.