

# XT-17M-S - Time relay, delay-on star/delta, 16 A, 2 C/O

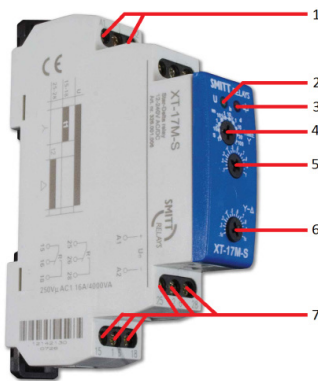
## Manual

### Description

The XT-17M-S is a delay-on time relay for star/delta engines, equipped with 2 C/O contacts with separate time delay-on setting. With the main rotary switch the time delay range is set. With the fine time setting a range of 10 %...100 % of the main time is set.

T1 (star) can be set between 0.1 s...100 d  
 T2 (delta) can be set between 0.1 s...1 s

### Layout

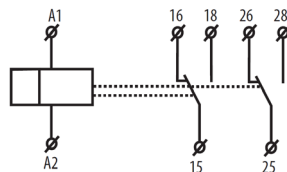


1. Supply terminals
2. Supply indication (green LED)
3. Output indication (red LED)
4. Main time setting T1
5. Fine time setting T1
6. Time setting
7. Output contacts

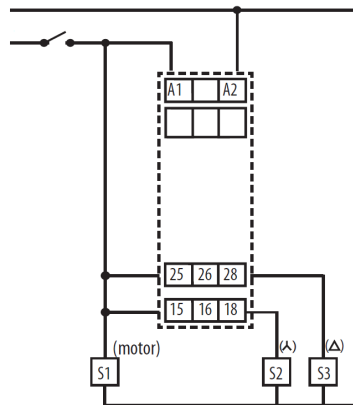
### Technical information

Supply voltage	12...240 VAC
Supply terminals	A1-A2
Contacts	2 C/O contacts
Rated current	16 A / AC1
Inrush current	30 A ≤ 3 s
Ambient temperature	-20 °C...+55 °C

### Connection diagram

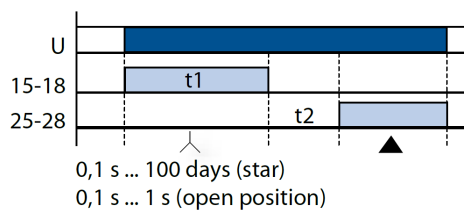


### Connection



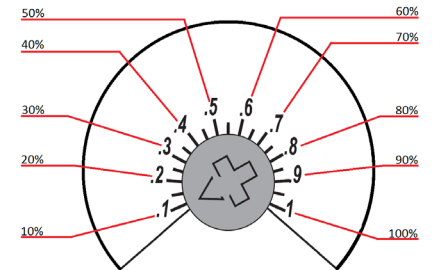
### Function

Energising of the coil will start the time delay(s). When the set time is expired the contact will switch and timing of T2 will start and will switch when the selected time has expired. Both contacts have an individual time setting.



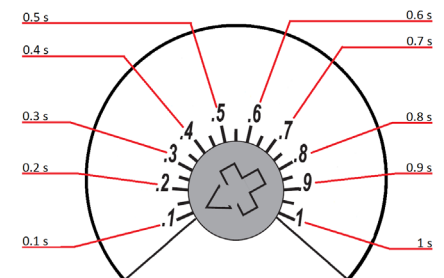
### Fine time setting T1

The fine time setting can be set within 10...100 % of the selected main range.



Example: if the main time setting is 10 min, the fine time setting can be set between 1...10 min.

### Fine time setting T2



The time delay can be set between 0.1s...1 s.

### Installation

- Install and connect wiring according the identification on the terminals and connection diagram
- Do not reverse the polarity of the coil connection
- Relays can be mounted next to each other
- Warning! Never use silicon near the relays

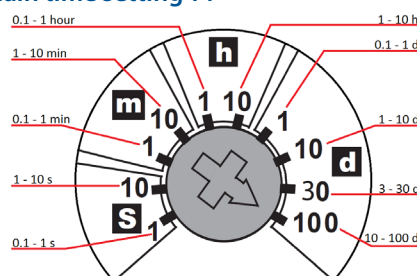
### Operation

- Before first operation; always apply voltage to supply and check correct operation
- Switching the load a few times before first use is advisable
- When the LED is green, coil voltage is indicated
- When the relay does not operate but coil voltage is present, coil polarity can be reversed
- Warning: Do not use the relay in locations with flammable gas, as the arc generated by switching could ignite the gas

### Maintenance

- If the relay does not operate correctly, check the presence of the coil voltage by using a multimeter
- If the relay does not work after inspection, replace the relay by a similar model

### Main time setting T1



The main time setting selects the maximum time range.